

LIVINGSTONES KABINET – THE EINSTEIN OF SEX – TECH SPEC

Tour Leader: post to be decided; contact mail@livingstoneskabinet.com

Artistic director: Nina Kareis, tel .: 26472419, e-mail: nina@livingstoneskabinet.com

Administration tel .: 61669807, e-mail: admin@livingstoneskabinet.com

International Producer: Gavin Clarke e-mail: gavin@livingstoneskabinet.com

REQUIREMENTS FOR PLAYING, TECHNOLOGY etc. .:

Stage Area: Blackbox, end-on, minimum 9 meters wide, 9 meters deep. Preferred 10wide x 9 deep

Power: We need min. 64 Amp for lighting, and 1x16 amp for audio systems.
Onstage 2 x LK outlet + plugs Respectively KS and DS. Power to operating technician in F.O.H.

Stage: The performance's set design consists of a backdrop (7m wide and 3.5m high), 3 moveable bookshelves (2.5 meters high), 4 moveable desks, chairs and an electric piano + keyboard on stage. There is also a larger, higher backdrop which can be used in larger venues.

Light: See attached light plan for rigging overview and onstage measurements. We have our own video projector, which will be put on the floor.

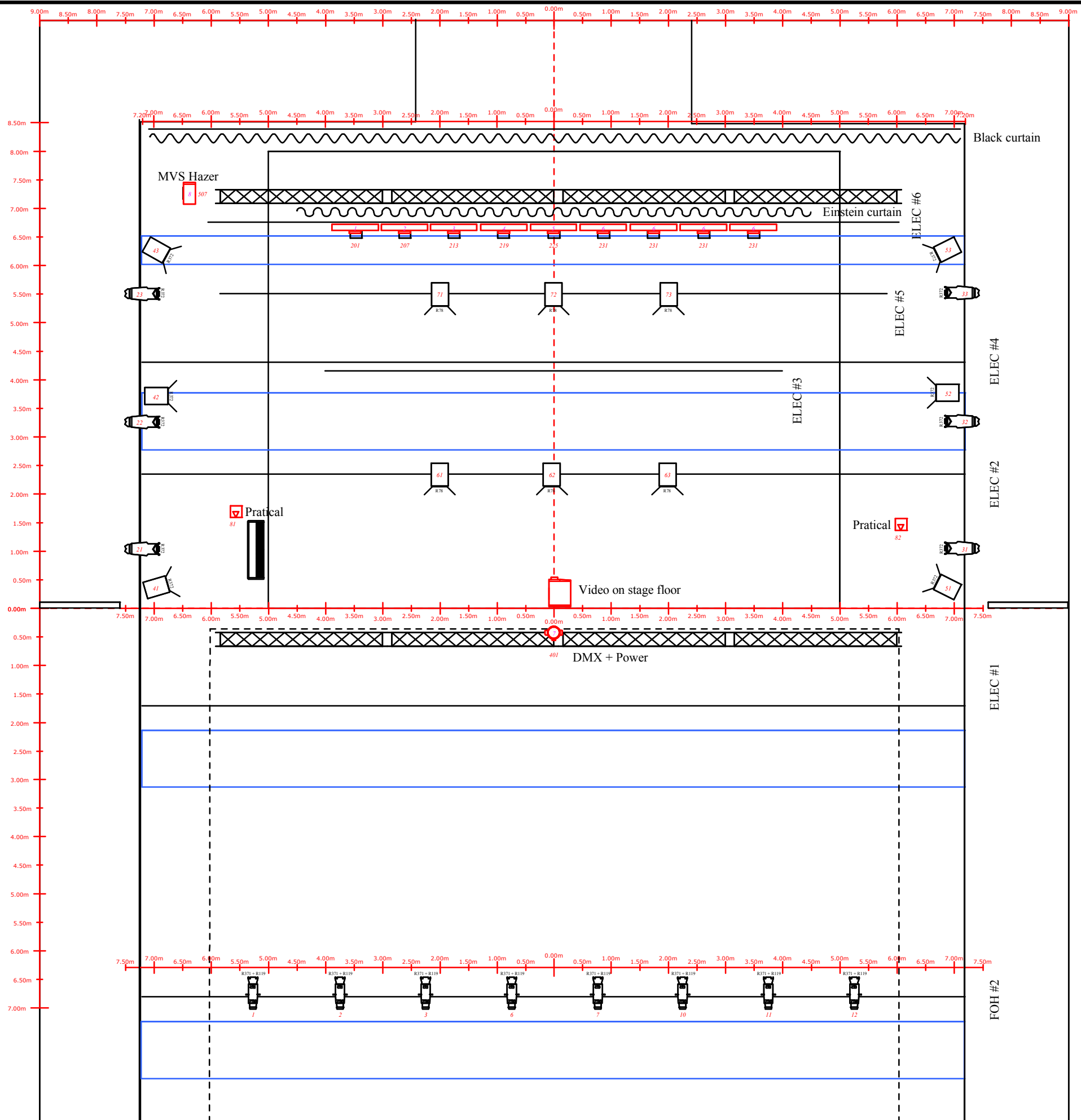
Audio: On tour we can bring our own L / R PA system (2 pcs. L-acoustic x12 + 2. SB18) which stands in front of stage, two monitors, a private wireless equipment (7 microports) and QLAB computer and mixer for the operator. We would of course speak to the venue about in-house system if available.

Blackout and masking: We bring no additional covering. If the performance takes place in a theater, hall etc., where there are no black walls, we require black covering i.e. backdrop, and wings or enclosure with side limbs. We require a blackout in the room.

Wardrobes:

We need heated wardrobes for 7 actors - five men, one woman and a child.
Moreover, we need a cozy place where the child and a child-minder can sit while the child is not on stage.

The performance's duration: approx. 85 minutes



Symbol	Name	Count	Wattage	Lamp	Lens	Fixture Options	Notes
	Arena Theatre Fresnel; 245mm Barndoor [1]	12	2500	CP/91 230V			
	Source 4 - 25/50 Zoom	6	750	HPL 750W/230V			
	Source 4 750	8	750	HPL 750W/230V	26 Degree		
	Trackpod 81	9	115	LED		Channel Mode: 6 Channel; DMX Mode: 8	Production Fixture
	MAC Aura	1	260	LED		Mode: Std.; PTSP: Fast; Colour Calib: Off	Production Fixture
	Practical	2	40				Production Fixture
	Medium Video Projector	1	3000	3K Xenon	0.8-1:1	Zoom: 2x DMX	Production Fixture
	DF-50 Hazer	1	1300				Production Fixture

NOTES

- Atmosphere machines USR
- All fixtures to have safety chains
- Opto splitters to be supplied where necessary
- termination on all DMX
- rigging safety gear to be supplied by house

Einstein of Sex			
Espoon Kultturi		(All Layers)	
Invalid Selectio	Lighting Designer	Michael Breiner	Assistant Mads Stagis
	Director	Nina Karais	
	Scenic Designer	Dorthe Holbaek	
	Printed By	Michael	Print Time Sep/27/16
			File EOS Luhisali 27-09-2016

Color Count

(All Layers)

Venue: Espoon Kultturi

Show: Einstein of Sex

Designer:

Assistant:

Color	Type	Count
R78	2KW Fresnel	6
R371 + R119	S4 750 26 DG	8
R372	"KW Fresnel	6
R372	S4 750 Zoom	6
R160	Track Pod	9

Sep/27/16

Michael Breiner
Mads Stagis